

# HYDTLKT

RELIABLE.MORAL.TRUST



AVAILABILITY



QUALITY



SERVICE



RELIABILITY



MOVE FAST



9056603301



perfectenterprises50@gmail.com



SCO-14, VASANT VIHAR, PH-3, BACK SIDE OF SABZI  
MANDI PEER BABA ROAD, DHAKOLI ZIRAKPUR,  
PUNJAB 140603

**Pipe Threading Machine 2"**

**FAST & POWERFUL !**

1. 1300W induction motor, 36rpm no load.
2. Reinforced gearbox, 20CrMn Ti, 40Cr material with special heat treatment, provides improved machine service life and precision.
3. Heavy-duty proven performance on threading and cutting.
4. Self-centering cutter.
5. 5 flute cone reamer, high efficiency debur on tube.
6. Easy replaceable clamping jaws.
7. New epoxy powder coating.
8. G.W./N.W.: 75/65Kg
9. MEAS: 74 X 48 X 53cm

**STANDARD EQUIPMENT:**

- 1 Profiling die head 1/2" -2", right dies sets (1/2" -3/4") and (1"-2") 3 legs, 1 cutting oil, 1 cutting oil canister and one set of mounting tools.



**HYD-50TH-F**

CODE	VOLTAGE	POWER	DIES TYPE
50TH-F-A	220V 50/60Hz	1300W	BSPT
50TH-F-B	220V 50/60Hz	1300W	NPT



**Pipe Threading Machine 4"**



**FAST & POWERFUL!**

1. 1300W induction motor, 2-speed 30 rpm and 14 rpm no load.
2. Reinforced gearbox, 20CrMn Ti, 40cr material with special heat treatment, provides improved machine service life and precision.
3. Heavy-duty proven performance on threading and cutting.
4. Self-centering Cutter.
5. 5 flute cone reamer, high efficiency debur on tube.
6. Easily replaceable clamping jaws.
7. New epoxy powder coating.
8. G.W./N.W.: 145/125KG
9. MEAS: 96 x 65 x 61 cm

**STANDARD EQUIPMENT:**

Supplied with 1 Profiling die head 1/2" -2 and 1 Profiling 2.1/2" -4" die head, right dies sets (1/2" - 3/4") (1"-2") and (2.1/2"-4") 4 legs cutting oil, 1 cutting oil canister and one set of mounting tools.

**HYD-100TH-F**

CODE	VOLTAGE	POWER	DIES TYPE
100TH-F-A	220V 50/60Hz	1300W	BSPT
100TH-F-B	220V 50/60Hz	1300W	NPT

## Pipe Threading Machine 2''

1. Suitable for right 1/2" -2" pipe threading.
2. Performs cutting, remaining and threading operations in a minimum time.
3. Single phase, induction motor, 28rpm no load
4. Easily replaceable self-clamping jaws.
5. G.W./N.W.: 75/65Kg
6. MEAS: 74 X 48 X 53cm

**STANDARD EQUIPMENT:**

P50 Includes: 1 Profiling die head 1/2"-2" right dies sets (1/2"-3/4") and (1"-2"), 3 Legs, 1 cutting Oil. 1 cutting oil canister and one set of mounting tools.



**HYD-50TH**

CODE	VOLTAGE	POWER	DIES TYPE	REMARK
50TH-A	220V 50/60Hz	750W	BSPT	
50TH-B	220V 50/60Hz	750W	NPT	
50TH-C	220V 50/60Hz	900W	BSPT	5 flute cone reamer metal cut handle
50TH-D	220V 50/60Hz	900W	NPT	5 flute cone reamer metal cut handle
50TH-I	220V 50/60Hz	1300W	BSPT	5 flute cone reamer metal cut handle
50TH-J	220V 50/60Hz	1300W	NPT	5 flute cone reamer metal cut handle



**HYD-80TH**

## Pipe Threading Machine 3''

1. Suitable for right 1/2" - 3" pipe threading.
2. Powered by a quiet, 2-speed condenser motor.
3. Efficient 2-speed transmission 20 rpm and 10 rpm no load.
4. G.W./N.W.: 115/100Kg
5. MEAS: 95 X 61 X 60cm

**STANDARD EQUIPMENT:**

Supplied with 1 Profiling 1/2" -2 die head and 1 profiling 2.1/2" -3" die head right dies sets (1/2" -2 -3/4"), (1" -2") and (2.1/2" -3"), 4 Legs, 1 cutting oil, 1 cutting oil canister and one set of mounting tools.

CODE	VOLTAGE	POWER	DIES TYPE	REMARK
80TH-A	220V50/60Hz	750W	BSPT	
80TH-B	220V50/60Hz	750W	NPT	
80TH-C	220V50/60Hz	900W	BSPT	metal cutter handle
80TH-D	220V50/60Hz	900W	NPT	metal cutter handle

**Pipe Threading Machine 4"**

1. Suitable for right 1/2" -4" pipe threading.
2. Powered by condenser motor for quiet operation.
3. Efficient 2- speed transmission 24 rpm and 8 rpm no load.
4. G.W./N.W.: 145/125KG
5. MEAS : 96 X 65 X 61cm

**STANDARD EQUIPMENT:**

Supplied with 1 Profiling die head 1/2" -2 and 1 profiling 2.1/2" -4" Die head right dies sets (1/2" - 3/4") (1"-2") and (2.1/2"-4"), 4 legs, 1 cutting oil, 1 cutting oil canister and one set of mounting tools.



**HYD-100TH**

CODE	VOLTAGE	POWER	DIES TYPE	REMARK
100TH-A	220V 50/60Hz	750W	BSPT	
100TH-B	220V 50/60Hz	750W	NPT	
100TH-C	220V 50/60Hz	900W	BSPT	5 flute cone reamer
100TH-D	220V 50/60Hz	900W	NPT	5 flute cone reamer

**Pipe Threading Machine 6"**



1. This ultimate in 6" is specifically designed for 150mm pipes
2. Efficient 2-speed transmission 23 rpm and 10 rpm no load.
3. Automatic lubrication through the head directly on the dies. Oil pump for the mechanical system (gear box) with oil Flow rate selector according to size.
4. Threading size, thread length and microfine adjustment of thread diameter can all be adjusted easily.
5. G.W./N.W.: 200/170Kg
6. MEAS: 110 X 77 X 69cm

**STANDARD EQUIPMENT:**

Supplied with 1 Profiling 2.1/2" -4" die head 1 profiling 5" -6" die head, right dies sets (2.1/2" -4") and (5"-6"), 4 legs, 1 cutting oil, 1 cutting oil canister and one set of mounting tools.

**HYD-150TH**

CODE	VOLTAGE	POWER	DIES TYPE
150TH-A	220V 50/60Hz	1100W	BSPT
150TH-B	220V 50/60Hz	1100W	NPT

## BOLT & Pipe Threading Machine 2"

1. Quick-opening Die Head, easily replaceable pipe Dies or bolt Dies.
2. Suitable for right 1/2" -2" pipe threading or M10-M33 bolt threading
3. Single phase, all-purpose motor, induction motor. 28rpm no load.
4. Easily Replaceable clamping jaws.
5. G.W./N.W.: 75/65KGr.
6. MEAS: 74 X 48 X 53cm

### STANDARD EQUIPMENT:

1 quick-opening Die Head 1/2"-2", right dies sets (1/2"-3/4") and (1" -2"), or bolt dies set M10-M33, 3 legs. 1 cutting oil, 1 cutting oil canister and 1 set of mounting tools.



**HYD-50TH-E**

CODE	VOLTAGE	POWER	DIES TYPE	REMARK
HYD-50TH-E 1	220V 50/60Hz	750W	BSPT	1/2" -2"
HYD-50TH-E 2	220V 50/60Hz	750W	M	M10-M33
HYD-50TH-E 3	220V 50/60Hz	750W	NPT	1/2" -2"
HYD-50TH-E 4	220V 50/60Hz	900W	BSPT	1/2" -2" ,5 flute cone Reamer
HYD-50TH-E 5	220V 50/60Hz	900W	M	M-10 M33,5 flute cone Reamer
HYD-50TH-E 6	220V 50/60Hz	900W	NPT	1/2" -2" ,5 flute cone Reamer



**HYD-50TH-MP**

## Pipe Threading Machine 2"

1. Suitable for right BSPT 1/2" -2" pipe threading and M8-M24 bolt threading.
2. Performs cutting, reaming and threading operations in a minimum time.
3. Single phase, all-purpose motor, Induction motor. 20rpm no load.
4. Easily replaceable clamping jaws.
5. G.W./N.W.: 75/65 Kg.
6. MEAS.: 74 x 48 x 53cm

### STANDARD EQUIPMENT:

50TH-MP Includes: 1 Profiling die head 1/2" -2" and 1 die head for bolt M8-M24, right dies sets (1/2" - 3/4"), (1"-2"), 3 legs, 1 cutting Oil. 1 cutting Oil Canister and one set of mounting tools.

CODE	VOLTAGE	POWER	DIES TYPE	REMARK
50TH-MP-1	220V50/60Hz	750W	BSPT	
50TH-MP-2	220V50/60Hz	750W	NPT	
50TH-MP-3	120V50/60Hz	900W	BSPT	
50TH-MP-4	220V50/60Hz	900W	NPT	5 flute cone reamer, metal cutter handle

**Portable Threader Machine**

1. Strong power 2300W single phase motor, 22rpm no load.
2. Light and compact threader, easily operate
3. Suitable for family repairing and using in project



**HYD-30TH-PT**

CODE	SIZE	PACKAGE UNIT	G.W. /N.W.(KG)	MEAS (cm)
30TH-PT-A	1/2" -1.1/4"	1	12/11	54 X 16 X 28
30TH-PT-B	1/2" -2"	1	18/17	64 X 17 X 35.5

**Pipe Hole Saw Machine**

Product Specification	HYD - 114D
Hole Cutting Capacity	up to 4" (114mm)
Pipe Mounting Size	1 1/4" -8" (32-220mm)
Drill Chuck Capacity	3-16mm
Roted Power	550W ( Induction)
Rotating Inc Speed	110 RPM (no Load)
Weight Approx	C.W. 17 Kg/ N.W. 15Kg
Package Size	500 x 300 x 340 mm
Stroke	100 mm
Max hole wall thickness	10 mm



**HYD114D**

**Electric Conduit Pipe Threading Machine**

**PRODUCT SPECIFICATION**

<b>Machine Size</b>	<b>C15 to C51mm</b>
<b>Dies</b>	<b>C-15, C-19-C-31, C-39-C-51</b>
<b>Thread Application</b>	<b>MS &amp; GI Conduit Pipe</b>
<b>Motor Power</b>	<b>750w/900w ( Single Phase)</b>
<b>Power Supply</b>	<b>220V</b>
<b>Speed</b>	<b>28 RPM</b>
<b>G.W / N.W</b>	<b>75Kg / 65Kg</b>
<b>Packing size</b>	<b>74 x 48 x 53 mm</b>



**HYD-C51-TH**

**Roll Groover**



Capacity	: 2"-8"
Motor power	: 750W (induction motor)
Rotation speed	: 23RPM
Max. Wall thickness of Pipe	: 8mm
G.W. / N.W.	: 82/65KGS
MEAS	: 90 X 52 X 62cm

**ACCESSORY:**

One set of 2" -6" roll set    One set of 8" roll set    One set of support stand

**HYD-RG-8**

**Benders With Tripod Stand**

**CHARACTERISTICS:**

1. Capable of bending angles from 0° to 90° on pipes ranging from 1/2" to 4"
2. Cold bending, no pre-warming of pipe is requires.
3. Works quicker with the two-speed, heavy-duty hydraulic pumping system.
4. Comfortable working position with the tripod stand.
5. Longer piston stroke per pumping and optimized hand force minimizes operator fatigue.
6. Supplied in a wooden case with a set of bending shoes and service pack.



Model	Hydraulic Ram Output (Ton)	Ram Stroke (mm)	Bending Range (O.D.) (mm)	Bending Shoes (inch)	G.W. (Kg)	Packing Size (cm)
HYD-2J	13	250	021.3-060	1-2" 3/4" 1" 1 1/4" 1 1/2" 2"	48.2	73 x 32 x 20
HYD-3J	20	290	021.3-088.5	1/2" 3/4" 1" 1 1/4" 1 1/2" 2" 2 1/2" 3"	100.5	94 x 40 x 21
HYD-4J	20	370	021.3-0108	1/2" 3/4" 1" 1 1/4" 1 1/2" 2" 2 1/2" 3" 4"	156.8	118 x 46 x 25

**PRESSURE TESTING PUMPS**

MODEL	WORKING PRESSURE (bar)	SUCTION CAPACITY
HYD-25PT	25	10ML/STROKE
HYD-40PT	40	10ML/STROKE
HYD-60PT	60	10ML/STROKE



MODEL	HYD-60PT-A
WORKING PRESSURE (BAR)	0-60
FLOW VOLUME (ML/MIN)	6.0
VOLTAGE (V)	110/220
TYPE OF POWER (W)	400
G.W./N.W. (KG)	17/15
MEAS (CM)	40X30X29



MODEL	HYD-340
VOLTAGE	220V
POWER	1.5 KW
PRESSURE RANGE	0-60 BAR
NOMINAL FLOW	9L/MIN
FREQUENCY	50HZ
MOTOR ROTATION SPEED	2800 RPM
G.W. APPROX.	10KG
PACKING SIZE (MM)	400X320X200



MODEL	HYD-350
VOLTAGE	220V
POWER	1.8 KW
PRESSURE RANGE	0-80 BAR
NOMINAL FLOW	18L/MIN
FREQUENCY	50HZ
MOTOR ROTATION SPEED	2800 RPM
G.W. APPROX.	28KG
PACKING SIZE (MM)	550X500X320

SPARES & ACCESSORIES



Die Head Assembly



Cutting Blade



Motor With Gearbox



Reamer Assembly



Holder Feet



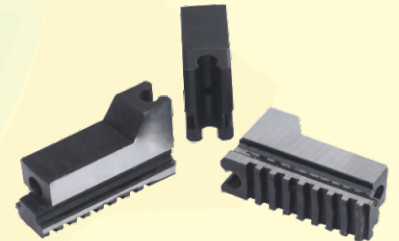
Dies



Rear Chuck Assembly



Gear Wheel & Bearing



Front Chuck Jaws



Oil Pump



Cutter Assembly

Contact Us  
9056603301